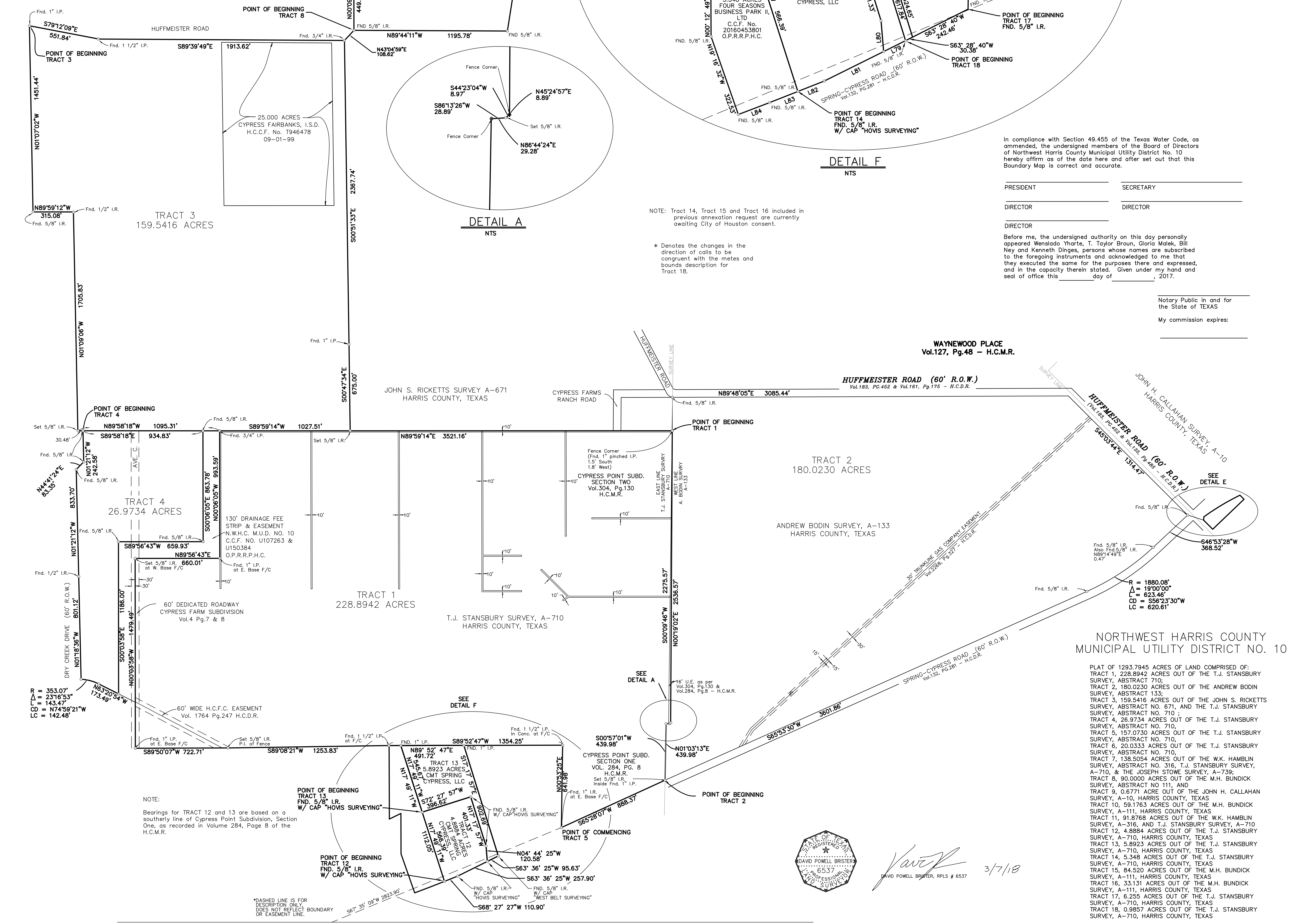


Curve #	Length	Radius	Bearing	Chord Direction	Chord Length
C1	129.22	227.67	32°31'15"	S40°27'11"E	127.50
C2	460.13	760.00	34°41'21"	S39°22'08"E	453.14
C3	82.27	210.00	22°26'45"	S33°14'51"E	81.74
C4	127.88	230.00	31°51'33"	S60°23'59"E	126.24
C5	68.95	450.00	09°46'48"	S80°43'02"E	68.89
C6	78.85	150.00	30°07'09"	S70°02'48"E	77.85
C7	168.33	600.00	16°04'28"	S46°56'59"E	167.78
C8	219.63	1100.00	11°26'24"	S44°37'56"E	219.28
C9	238.53	1200.00	11°23'20"	S56°02'47"E	238.14

Line #	Direction	Length	Line #	Direction	Length
L1	S62°28'20"W	39.11	L21	S48°10'43"W	37.25
L2	S34°35'57"W	207.74	L22	S65°40'37"W	71.52
L3	S02°17'10"W	208.34	L23	S77°45'07"W	41.86
L4	S24°44'55"W	65.51	L24	N50°26'43"W	101.04
L5	S48°31'48"W	81.59	L25	S57°02'26"W	46.07
L6	S17°14'18"W	130.33	L26	S39°17'14"W	61.61
L7	S25°34'11"E	75.70	L27	S18°51'12"W	93.54
L8	S52°34'11"E	53.17	L28	S00°47'52"W	53.84
L9	S85°11'12"E	103.76	L29	S00°40'34"W	96.93
L10	S89°47'29"E	200.39	L30	S20°50'32"E	80.52
L11	S73°09'22"E	139.47	L31	S19°16'20"E	93.67
L12	S54°28'12"E	111.30	L32	S03°37'41"E	73.68
L13	S27°45'35"E	52.95	L33	S22°07'14"E	180.43
L14	S09°57'23"E	67.12	L34	S52°15'14"E	73.20
L15	S41°47'55"E	249.00	L35	S81°08'30"E	301.35
L16	S48°11'04"E	35.41	L36	S76°48'01"E	312.18
L17	S01°37'37"E	145.23	L37	S76°17'40"E	106.71
L18	S54°52'21"W	61.58	L38	N76°31'03"E	161.70
L19	S31°32'56"W	27.11	L39	N47°18'50"E	56.19
L20	S06°13'45"E	25.26	L40	S89°21'58"E	167.65

Line #	Direction	Length	Line #	Direction	Length
L41	S56°09'12"E	98.86	L61	N60°30'28"E	36.68
L42	S12°17'16"E	165.62	L62	N67°32'28"E	62.62
L43	S05°58'17"W	82.27	L63	S66°50'22"E	38.71
L44	S02°46'29"W	142.35	L64	S08°03'15"E	38.53
L45	S03°20'00"E	195.30	L65	S27°00'36"E	94.73
L46	S30°40'25"E	135.02	L66	N87°33'59"E	50.95
L47	S47°21'24"E	44.33	L67	S63°13'48"E	22.79
L48	S83°01'35"E	135.40	L68	N28°51'11"E	33.43
L49	N76°40'12"E	87.51	L69	N67°10'31"E	44.64
L50	N24°42'10"E	76.12	L70	S22°49'29"E	192.26
L51	N18°26'57"E	132.93	L71	S50°34'51"E	161.70
L52	N87°37'07"E	99.80	L72	N00°10'42"W	77.87
L53	S17°22'07"E	65.98	L73	N50°24'51"W	97.24
L54	S41°37'31"E	36.72	L74	N22°49'29"W	177.44
L55	S61°25'23"E	128.73	L75	N67°10'31"E	10.07
L56	N63°06'54"E	150.71	L76	N20°19'29"W	153.24
L57	N58°29'41"E	223.07	L77	N89°11'44"W	64.90
L58	N65°23'46"E	47.92	L78	S89°11'44"E	126.54
L59	N69°12'33"E	211.12	L79	S83°36'25"W	95.63
L60	N61°11'34"E	58.74	L80	N40°44'25"W	120.58

* Denotes the changes in the direction of calls to be congruent with the metes and bounds description for Tract 18.



Curve #	Length	Radius	Bearing	Chord Direction	Chord Length
C1	129.22	227.67	32°31'15"	S40°27'11"E	127.50
C2	460.13	760.00	34°41'21"	S39°22'08"E	453.14
C3	82.27	210.00	22°26'45"	S33°14'51"E	81.74
C4	127.88	230.00	31°51'33"	S60°23'59"E	126.24
C5	68.95	450.00	09°46'48"	S80°43'02"E	68.89
C6	78.85	150.00	30°07'09"	S70°02'48"E	77.85
C7	168.33	600.00	16°04'28"	S46°56'59"E	167.78
C8	219.63	1100.00	11°26'24"	S44°37'56"E	219.28
C9	238.53	1200.00	11°23'20"	S56°02'47"E	238.14

Line #	Direction	Length	Line #	Direction	Length
L1	S62°28'20"W	39.11	L21	S48°10'43"W	37.25
L2	S34°35'57"W	207.74	L22	S65°40'37"W	71.52
L3	S02°17'10"W	208.34	L23	S77°45'07"W	41.86
L4	S24°44'55"W	65.51	L24	N50°26'43"W	101.04
L5	S48°31'48"W	81.59	L25	S57°02'26"W	46.07
L6	S17°14'18"W	130.33	L26	S39°17'14"W	61.61
L7	S25°34'11"E	75.70	L27	S18°51'12"W	93.54
L8	S52°34'11"E	53.17	L28	S00°47'52"W	53.84
L9	S85°11'12"E	103.76	L29	S00°40'34"W	96.93
L10	S89°47'29"E	200.39	L30	S20°50'32"E	80.52
L11	S73°09'22"E	139.47	L31	S19°16'20"E	93.67
L12	S54°28'12"E	111.30	L32	S03°37'41"E	73.68
L13	S27°45'35"E	52.95	L33	S22°07'14"E	180.43
L14	S09°57'23"E	67.12	L34	S52°15'14"E	73.20
L15	S41°47'55"E	249.00	L35	S81°08'30"E	301.35
L16	S48°11'04"E	35.41	L36	S76°48'01"E	312.18
L17	S01°37'37"E	145.23	L37	S76°17'40"E	106.71
L18	S54°52'21"W	61.58	L38	N76°31'03"E	161.70
L19	S31°32'56"W	27.11	L39	N47°18'50"E	56.19
L20	S06°13'45"E	25.26	L40	S89°21'58"E	167.65

* Denotes the changes in the direction of calls to be congruent with the metes and bounds description for Tract 18.

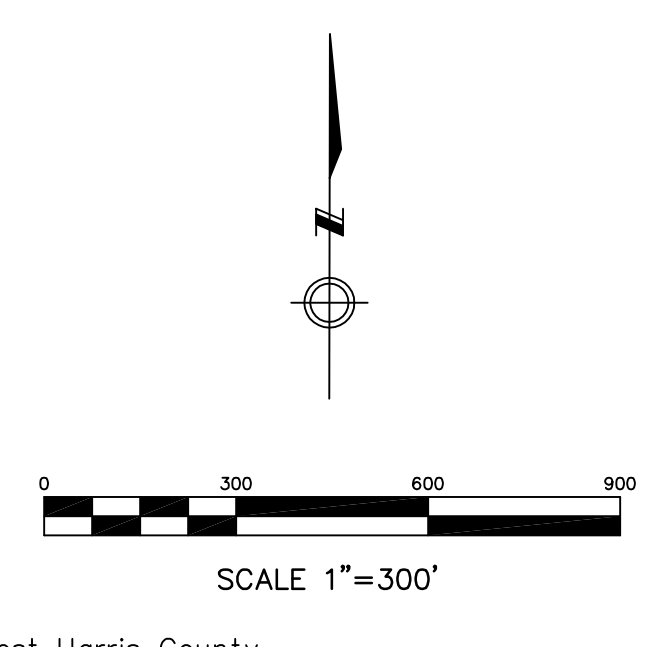
○ DENOTES 5/8" IRON ROD WITH CAP "S&V SURVEYING" UNLESS OTHERWISE NOTED

NOTE: Dimensions shown for the East line of Tract 1 are per recorded plat for CYPRESS POINT SUBD., Section One, Vol. 284, Pg. 8, and Section Two, Vol. 304, Pg. 130, H.C.M.R.

Dimensions shown for Tract 2 are based on a land title survey performed by Clark Surveying Co. on June 26, 1996. (Job No. 63-01-1679)

This is not a boundary survey. The purpose of this exhibit is to show the overall district map of Northwest Harris County Municipal Utility District No. 10.

Tract 14, Tract 15, and Tract 16 included in previous annexation request are currently awaiting City of Houston consent.



KEY MAP NO. 327-7 & 367-C

DETAIL A NTS

NOTE: Tract 14, Tract 15 and Tract 16 included in previous annexation request are currently awaiting City of Houston consent.

* Denotes the changes in the direction of calls to be congruent with the metes and bounds description for Tract 18.

DETAIL F NTS

NOTE: Tract 14, Tract 15 and Tract 16 included in previous annexation request are currently awaiting City of Houston consent.

* Denotes the changes in the direction of calls to be congruent with the metes and bounds description for Tract 18.

In compliance with Section 49.455 of the Texas Water Code, as amended, the undersigned members of the Board of Directors of Northwest Harris County Municipal Utility District No. 10 hereby affirm as of the date here and other set out that this Boundary Map is correct and accurate.

PRESIDENT SECRETARY
DIRECTOR DIRECTOR
DIRECTOR

Before me, the undersigned authority on this day personally appeared Wieslawa Tharte, T. Taylor Brown, Gloria Malek, Bill Ney and Kenneth Dinges, persons whose names are subscribed to the foregoing instruments and acknowledged to me that they executed the same for the purposes here and other set out, and in the capacity therein stated. Given under my hand and seal of office this _____ day of _____, 2017.

Notary Public in and for the State of Texas
My commission expires: _____

WAYNEWOOD PLACE Vol.127, Pg.48 - H.C.M.R.

HUFFMEISTER ROAD (60' R.O.W.) Vol.183, Pg.462 & Vol.181, Pg.175 - H.C.D.R.

HUFFMEISTER ROAD (60' R.O.W.) Vol.183, Pg.462 & Vol.181, Pg.175 - H.C.D.R.

HUFFMEISTER ROAD (60' R.O.W.) Vol.183, Pg.462 & Vol.181, Pg.175 - H.C.D.R.

HUFFMEISTER ROAD (60' R.O.W.) Vol.183, Pg.462 & Vol.181, Pg.175 - H.C.D.R.

HUFFMEISTER ROAD (60' R.O.W.) Vol.183, Pg.462 & Vol.181, Pg.175 - H.C.D.R.

HUFFMEISTER ROAD (60' R.O.W.) Vol.183, Pg.462 & Vol.181, Pg.175 - H.C.D.R.

HUFFMEISTER ROAD (60' R.O.W.) Vol.183, Pg.462 & Vol.181, Pg.175 - H.C.D.R.

HUFFMEISTER ROAD (60' R.O.W.) Vol.183, Pg.462 & Vol.181, Pg.175 - H.C.D.R.

HUFFMEISTER ROAD (60' R.O.W.) Vol.183, Pg.462 & Vol.181, Pg.175 - H.C.D.R.

HUFFMEISTER ROAD (60' R.O.W.) Vol.183, Pg.462 & Vol.181, Pg.175 - H.C.D.R.

HUFFMEISTER ROAD (60' R.O.W.) Vol.183, Pg.462 & Vol.181, Pg.175 - H.C.D.R.

HUFFMEISTER ROAD (60' R.O.W.) Vol.183, Pg.462 & Vol.181, Pg.175 - H.C.D.R.

HUFFMEISTER ROAD (60' R.O.W.) Vol.183, Pg.462 & Vol.181, Pg.175 - H.C.D.R.

HUFFMEISTER ROAD (60' R.O.W.) Vol.183, Pg.462 & Vol.181, Pg.175 - H.C.D.R.

HUFFMEISTER ROAD (60' R.O.W.) Vol.183, Pg.462 & Vol.181, Pg.175 - H.C.D.R.

HUFFMEISTER ROAD (60' R.O.W.) Vol.183, Pg.462 & Vol.181, Pg.175 - H.C.D.R.

HUFFMEISTER ROAD (60' R.O.W.) Vol.183, Pg.462 & Vol.181, Pg.175 - H.C.D.R.

HUFFMEISTER ROAD (60' R.O.W.) Vol.183, Pg.462 & Vol.181, Pg.175 - H.C.D.R.

HUFFMEISTER ROAD (60' R.O.W.) Vol.183, Pg.462 & Vol.181, Pg.175 - H.C.D.R.